

# Robust Detail V-WT-2



Twin timber frames with sheathing boards, minimum 50mm cavity.

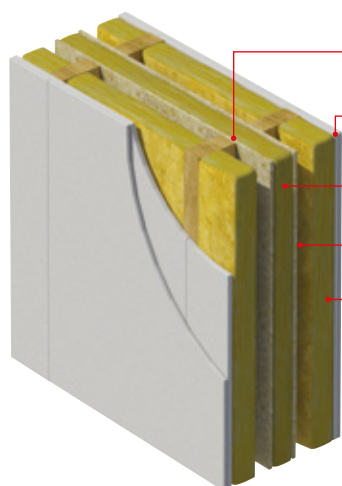
August 2017

## Benefits:

- Party Wall Thermal Bypass - Full-fill solution to aid zero u-value compliance.
- No requirement for pre-completion acoustic testing.



## V-WT-2



**Wall width:** 240mm (min) between inner faces of wall linings.  
50mm (min) gap between wall panels.

**Wall lining:** 2 or more layers of gypsum-based board (total nominal mass per unit area 22kg/m<sup>2</sup>), both sides.

**Insulation:** Superglass TF Party Wall Roll or TF Party Wall Slab

**Sheathing:** 9mm (min) thick board.

**Absorbent material:** 60mm (min) mineral wool batts or quilt (density 10 - 60kg/m<sup>3</sup>) both sides i.e Superglass Multi Acoustic Roll, Superglass Timber & Rafter Roll

**Ties:** Between frames not more than 40mm x 3mm, at 1200mm (min) centres horizontally, one row of ties per storey height vertically.

**External (flanking) wall:** Outer leaf masonry with minimum 50mm cavity.

**The requirements of the Robust Details Handbook should be strictly followed.**

### Superglass TF Party Wall Roll

Thickness (mm)	Length (m)	Width (mm)	Fire Classification	Generic BRE Green Guide Rating	Technical Handbook Section 5 (Scotland) Acoustic Performance at least 56 dB DnT,w(*)	Contributes to zero effective U-value (**)
60	10.50	2 x 675	A1 non-combustible	A+	YES	YES

(\*\*) When used in conjunction with effective edge sealing

### Superglass TF Party Wall Slab

Thickness (mm)	Length (mm)	Width (mm)	Fire Classification	Generic BRE Green Guide Rating	Technical Handbook Section 5 (Scotland) Acoustic Performance at least 56 dB DnT,w(*)	Contributes to zero effective U-value (**)
50	1200	600	A1 non-combustible	A+	YES	YES
60	1200	600	A1 non-combustible	A+	YES	YES
100	1200	600	A1 non-combustible	A+	YES	YES

(\*\*) When used in conjunction with effective edge sealing

For more information on the above Robust Detail please visit [www.robustdetails.com](http://www.robustdetails.com) or call our Technical Team on **0808 1645 134**.

(\*) The Section 5 Robust Details Handbook states that the separating cavity in V-WT-2 may be insulated with mineral wool with a density of 18 - 40kg/m<sup>3</sup> - Superglass TF Party Wall Roll and TF Party Wall Slab fulfills this requirement. Acoustic testing has been completed to demonstrate suitability in the above construction. If this solution were used on site with an equivalent construction and the same build quality, it would achieve the sound insulation performance level required by Technical Handbook Section 5 (Scotland).

#### Superglass Insulation Limited

Thistle Industrial Estate, Kerse Road, Stirling, Scotland FK7 7QQ

#### TECHNICAL

Hotline: **0808 1645 134**

Email: [technical@superglass.co.uk](mailto:technical@superglass.co.uk)

#### SALES

Tel: **01786 451170**

Email: [sales@superglass.co.uk](mailto:sales@superglass.co.uk)

Fax: **01786 451245**



[www.superglass.co.uk](http://www.superglass.co.uk)

Your insulation team  
**Superglass**

A TECHNOMICOL company