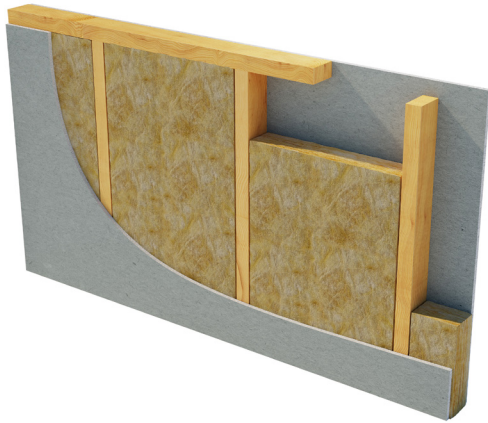


# Superglass Slab 45

Typical applications: General Building

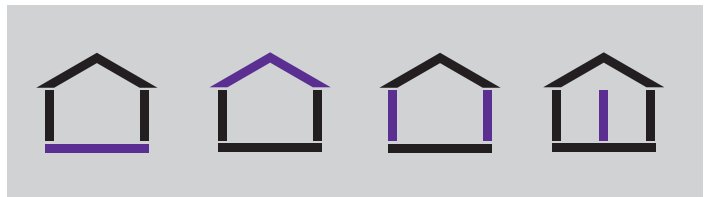


## Description

Superglass Slab 45 is an un-faced, non-combustible glass mineral wool insulation slab. Manufactured at a nominal density of 45kg/m<sup>3</sup>. The slab supplied is 600mm wide to allow easy installation between common stud spacings and minimum on-site cutting and waste.

## Application

Superglass Slab 45 is designed to provide thermal and acoustic insulation in a wide range of general building applications which include partition walls, ceilings, roofs and floors.



### BRE Green Guide Rating

Slab 45 has a generic BRE Green Guide Rating of A+.



### Fire Performance

Slab 45 has a fire classification of A1 (the highest possible rating) when tested to BS EN 13501-1 Reaction to Fire.



### Acoustic Insulation

Slab 45 provides excellent sound absorption performance.



### Recycled Content

Slab 45 is manufactured from up to 84% recycled glass.



### Easy & Quick To Install

Friction fits between studs and joists.



# Superglass Slab 45 | Characteristics

Product dimensions and information							
Thickness (mm)	Length (mm)	Width (mm)	Slabs per pack	Pack Area (m <sup>2</sup> )	R-Value (m <sup>2</sup> K/W)	Packs per pallet	Code
40	1200	600	10	7.20	1.25	16	5241
50	1200	600	8	5.76	1.55	16	5236
60	1200	600	6	4.32	1.85	16	5239
75	1200	600	6	4.32	2.30	16	5237
100	1200	600	4	2.88	3.10	16	5238

Slab 45 is a non-standard product

## Thermal Performance

Slab 45 has a declared thermal conductivity of 0.032W/mK.

## Density

Slab 45 is manufactured at a nominal density of 45kg/m<sup>3</sup>.

## Fire Performance

All Superglass products are deemed non-combustible and have a fire classification of A1 (the highest possible rating) when tested to BS EN 13501-1 Reaction to Fire.

## Environment

- Manufactured in accordance with ISO 14001:2015 - Environmental Management Systems (EMS).
- Zero Ozone Depletion Potential (ODP) & zero Global Warming Potential (GWP).
- Generic BRE Green Guide Rating of A+.

## Recycled Content

All Superglass products are manufactured from up to 84% recycled glass which would otherwise go to landfill.

## Standards

Manufactured in accordance with:

- BS EN 13162:2012(+A1:2015) Thermal insulation products for buildings - Factory made mineral wool (MW) products
- BS EN 13172: 2012 Thermal insulation products - Evaluation of conformity.

## Quality

All Superglass products are manufactured in accordance with BS EN ISO 9001:2015 - Quality Management Systems (QMS).

## Durability

All Superglass products are non-hygroscopic, will not rot, degrade or sustain vermin and will not encourage the growth of mould, bacteria or fungi.

## Vapour Resistance

All Superglass products offer negligible vapour resistance allowing vapour to pass freely through the insulation.

## Handling & Storage

All Superglass products are easy to handle, cut and install. The products are supplied compression packed in polythene to provide short term protection only. For long term protection, the product must be stored indoors or under a waterproof covering in order to protect from weather damage. The products should not be left permanently exposed to the elements.

## Certification

- CE Marked to BS EN 13162:2012(+A1:2015).
- Designation Code = MW-13162-T2.
- A copy of the Slab 45 Declaration of Performance (DoP) ref: DOP0002 can be obtained from the Technical Services Team.



**Superglass Insulation Limited.** Thistle Industrial Estate, Kerse Road, Stirling, Scotland FK7 7QQ

### Technical

Hotline: **0808 1645 134**

Email: [technical@superglass.co.uk](mailto:technical@superglass.co.uk)

### Sales


Tel: **01786 451170**

Email: [sales@superglass.co.uk](mailto:sales@superglass.co.uk)

### Social

 [www.facebook.com/TNintl/](http://www.facebook.com/TNintl/)

 [www.twitter.com/TNintl](http://www.twitter.com/TNintl)

 [www.linkedin.com/company/tninternational/](http://www.linkedin.com/company/tninternational/)

All rights are reserved, including those of photomechanical reproduction and storage in electronic media. Commercial use of the processes and work activities presented in this document is not permitted. Extreme caution was observed when putting together the information, texts and illustrations in this document. Nevertheless, errors cannot quite be ruled out. The publisher and editors cannot assume legal responsibility or any liability whatever for incorrect information and the consequences thereof. The publisher and editors will be grateful for improvement suggestions and details of errors pointed out.

