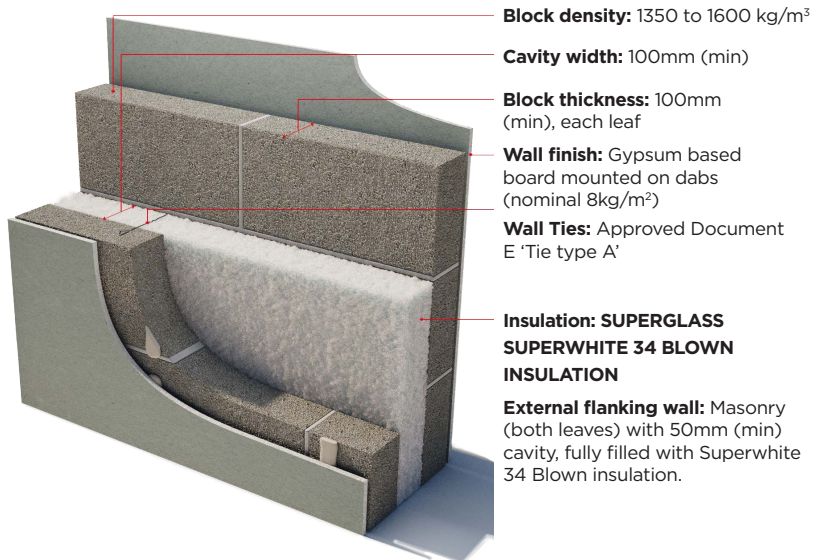


Robust Detail E-WM-33

August 2023
Data Sheet

- Lightweight Aggregate Blocks
- Minimum 100mm cavity
- Gypsum-based board (nominal 8 kg/m²) on dabs



- Block density:** 1350 to 1600 kg/m³
- Cavity width:** 100mm (min)
- Block thickness:** 100mm (min), each leaf
- Wall finish:** Gypsum based board mounted on dabs (nominal 8kg/m²)
- Wall Ties:** Approved Document E 'Tie type A'
- Insulation:** SUPERGLASS SUPERWHITE 34 BLOWN INSULATION
- External flanking wall:** Masonry (both leaves) with 50mm (min) cavity, fully filled with Superwhite 34 Blown insulation.



Superglass Superwhite 34 Blown Insulation

Benefits

- Compliant with standard 12.5mm plasterboard (nominal 8 kg/m² density)
- No parge coat required
- Party Wall Thermal Bypass - Full fill solution to aid zero u-value compliance.
- No requirement for pre-completion acoustic testing when using the Robust Details scheme
- Installed at high speed by approved contractors
- Provides one insulation technique on-site when used in conjunction with Superwhite 34 in external walls



Fire Classification when tested to BS EN 13501-1 Reaction to Fire	Generic BRE Green Guide Rating	Approved Document E (Eng & Wal) Acoustic Performance in excess of 45 dB DnT,w+Ctr	Contributes to zero effective U-value (**)
A1 non-combustible	A+	Yes	Yes

(**) When used in conjunction with effective edge sealing

For more information on the above Robust Detail please visit www.robustdetails.com or email our Technical Services Team Technical.stirling@etexgroup.com

The Part E Robust Details Handbook states that the separating cavity in E-WM-33 may be insulated using Superglass Party Wall Roll. Acoustic testing has been completed to demonstrate suitability in the above construction. If this solution were to be used on site with an equivalent construction and the same build quality, it would achieve the sound insulation performance level required by Approved Document E (England and Wales).

More Robust Details Solutions which can incorporate Superglass Party Wall Roll

Robust Details Solutions				
Robust Details	Minimum Cavity Width (mm)	Block Type & Density (kg/m ³)	Parge Coat Required	Wall Finish
E-WM-1	75	Dense Aggregate - 1850 to 2300	No	Wet Plaster
E-WM-2	75	Lightweight Aggregate - 1350 to 1600	No	Wet Plaster
E-WM-3	75	Dense Aggregate -1850 to 2300	Yes	Render and gypsum-based board on dabs
E-WM-4	75	Lightweight Aggregate - 1350 to 1600	Yes	Render and gypsum-based board on dabs
E-WM-5	75	Besblock 'Star Performer' -1528	Yes	Render and gypsum-based board on dabs
E-WM-6	75	Aircrete -600 to 800	Yes	Render and gypsum-based board on dabs
E-WM-10	75	Aircrete - Thin Joint System -600 to 800	Yes	Render and gypsum-based board on dabs
E-WM-11	100	Lightweight Aggregate - 1350 to 1600	Yes	Render and gypsum-based board on dabs
E-WM-12	75	Plasmor 'Aglite Ultima' - 1050	Yes	Render and gypsum-based board on dabs
E-WM-13	75	Aircrete - Thin Joint Untied System - 600 to 800	Yes	Render and gypsum-based board on dabs
E-WM-16	100	Dense Aggregate - 1850 to 2300	Yes	Render and gypsum-based board on dabs
E-WM-18	100	Dense Aggregate - 1850 to 2300	No	Wet Plaster
E-WM-19	100	Dense Aggregate - 1850 to 2300 or Lightweight Aggregate - 1350 to 1600	Yes	Render and gypsum-based board on dabs
E-WM-21	100	Lightweight Aggregate - 1350 to 1600	No	Wet Plaster
E-WM-25	100	Porotherm - Thin Joint - n/a	Yes	Ecoparge gypsum-based board on dabs
E-WM-26	100	Besblock 'Star Performer' -1528	No	Gypsum-based board on dabs
E-WM-34	125	Plasmor 'Aglite Ultima' - 1050	No	Gypsum-based board on dabs

The above table is to be used as a guide only. Always refer to the Robust Details Handbook.

Superglass Insulation Limited. Thistle Industrial Estate, Kerse Road, Stirling, Scotland FK7 7QQ

Technical
Hotline: **0808 1645 134**
Email: technical.stirling@etexgroup.com

Customer Services
Tel: **01786 451170**
Email: customerservice.stirling@etexgroup.com

Social
twitter.com/Superglass_UK
[linkedin.com/company/superglassuk/](https://www.linkedin.com/company/superglassuk/)
[facebook.com/superglassinsulationuk](https://www.facebook.com/superglassinsulationuk)

All rights are reserved, including those of photomechanical reproduction and storage in electronic media. Commercial use of the processes and work activities presented in this document is not permitted. Extreme caution was observed when putting together the information, texts and illustrations in this document. Nevertheless, errors cannot quite be ruled out. The publisher and editors cannot assume legal responsibility or any liability whatever for incorrect information and the consequences thereof. The publisher and editors will be grateful for improvement suggestions and details of errors pointed out.