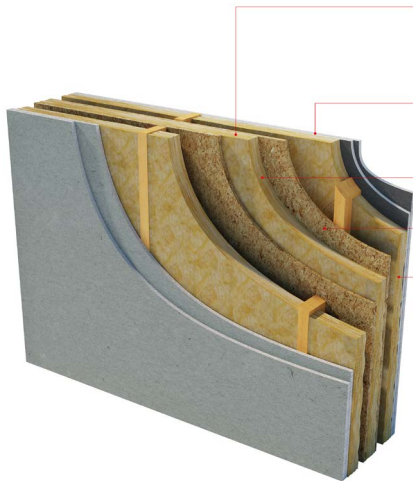


Robust Detail E-WT-1

August 2023
Data Sheet

- Twin timber frames with sheathing boards
- Minimum 50mm cavity



Wall width: 240mm (min) between inner faces of wall linings. 50mm (min) gap between studs (must not be bridged by any diagonal bracing).

Wall lining: 2 or more layers of gypsum-based board (total nominal mass per unit area 22 kg/m²), both sides - all joints staggered

Insulation: SUPERGLASS TF PARTY WALL ROLL

Sheathing: Partial sheathing of party wall - Please refer to Robust Details Handbook

Absorbent material: 60mm (min) mineral wool batts or quilt (density 10 - 60kg/m³) both sides i.e Superglass Multi Acoustic Roll, Superglass Timber & Rafter Roll

Ties: Between frames not more than 40mm x 3mm, at 1200mm (min) centres horizontally, one row of ties per storey height vertically.

External (flanking) wall: Outer leaf masonry with minimum 50mm cavity.



Superglass TF Party Wall Roll

Benefits

- Party Wall Thermal Bypass - Full-fill solution to aid zero u-value compliance.
- No requirement for pre-completion acoustic testing.

The requirements of the Robust Details Handbook should be strictly followed.

Superglass TF Party Wall Roll						
Thickness (mm)	Length (m)	Width (mm)	Fire Classification when tested to BS EN 13501-1 Reaction to Fire	Generic BRE Green Guide Rating	Approved Document E (Eng & Wal) Acoustic Performance in excess of 45 dB DnT,w+Ctr(*)	Contributes to zero effective U-value (**)
60	10.50	2x675	A1 non-combustible	A+	Yes	Yes

(**) When used in conjunction with effective edge sealing

For more information on the above Robust Detail please visit www.robustdetails.com or email our Technical Services Team Technical.stirling@etexgroup.com

The Part E Robust Details Handbook states that the separating cavity in E-WT-1 may be insulated using Superglass Party Wall Roll. Acoustic testing has been completed to demonstrate suitability in the above construction. If this solution were to be used on site with an equivalent construction and the same build quality, it would achieve the sound insulation performance level required by Approved Document E (England and Wales).

Superglass Insulation Limited. Thistle Industrial Estate, Kerse Road, Stirling, Scotland FK7 7QQ

Technical
Hotline: **0808 1645 134**
Email: technical.stirling@etexgroup.com

Customer Services
Tel: **01786 451170**
Email: customerservice.stirling@etexgroup.com

Social
twitter.com/Superglass_UK
[linkedin.com/company/superglassuk/](https://www.linkedin.com/company/superglassuk/)
[facebook.com/superglassinsulationuk](https://www.facebook.com/superglassinsulationuk)

All rights are reserved, including those of photomechanical reproduction and storage in electronic media. Commercial use of the processes and work activities presented in this document is not permitted. Extreme caution was observed when putting together the information, texts and illustrations in this document. Nevertheless, errors cannot quite be ruled out. The publisher and editors cannot assume legal responsibility or any liability whatever for incorrect information and the consequences thereof. The publisher and editors will be grateful for improvement suggestions and details of errors pointed out.